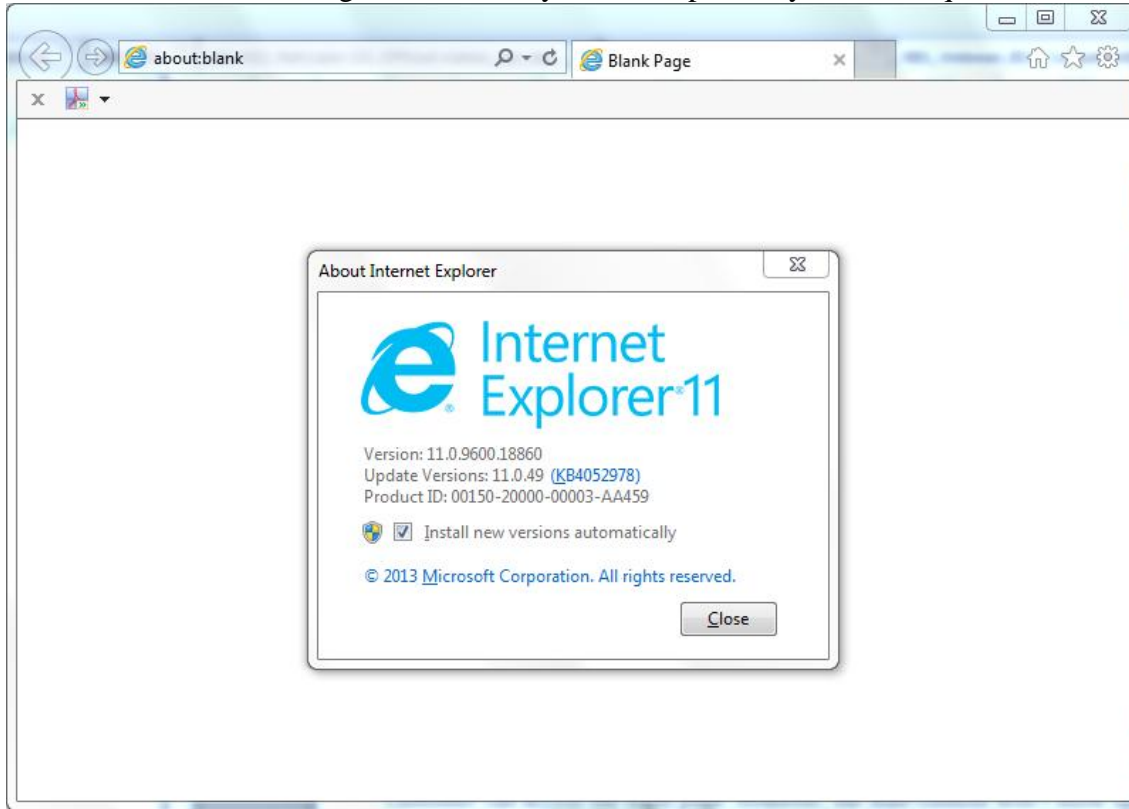
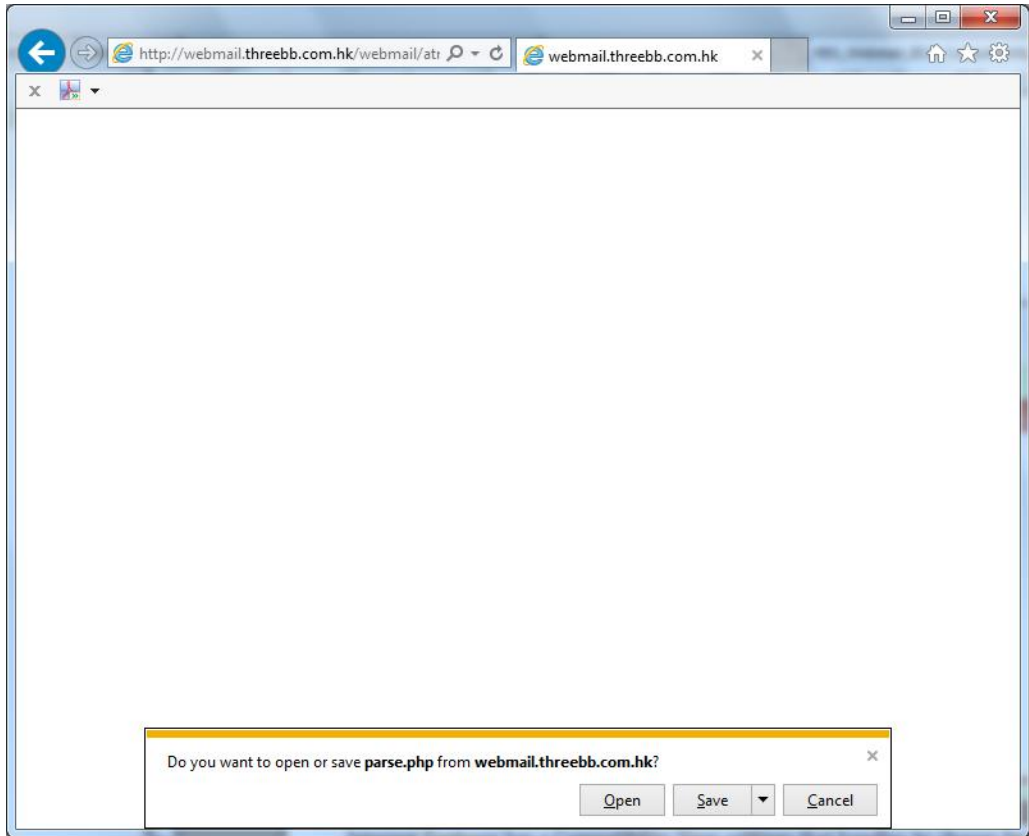


Internet Explorer 11 changes the way of detecting IE browsers and affects the webmail portal to detect. To enable accessing the webmail system, compatibility view is required.



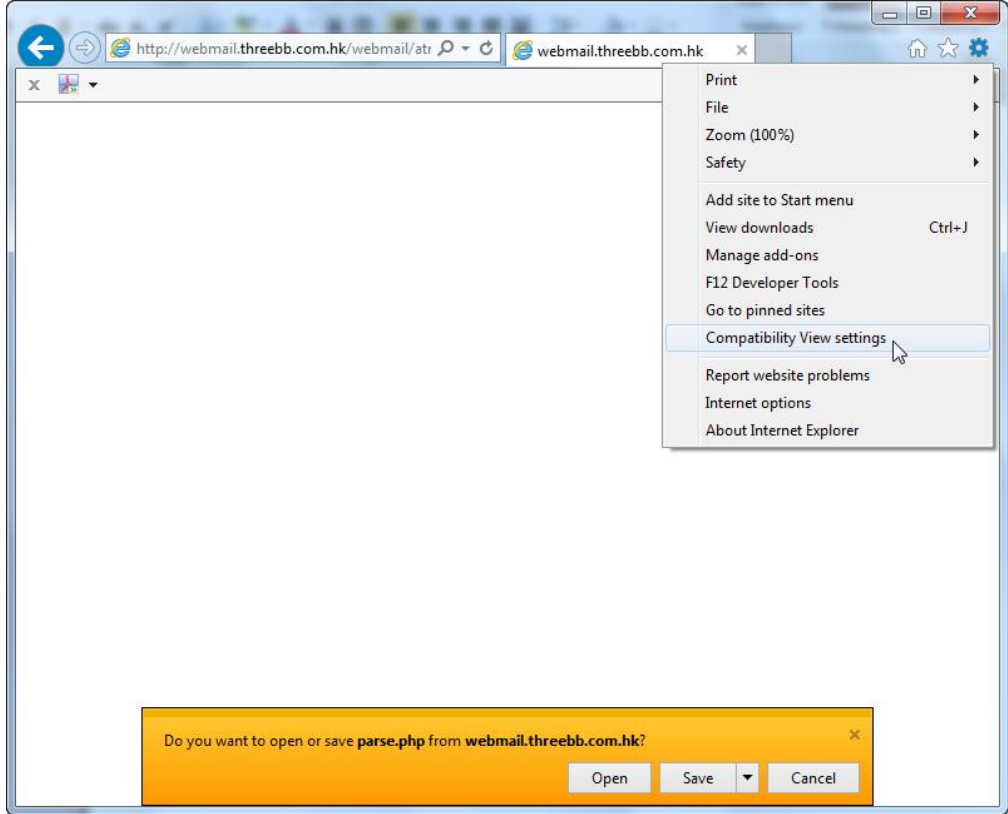
Customer can access the login page. However, the mail content won't show up.



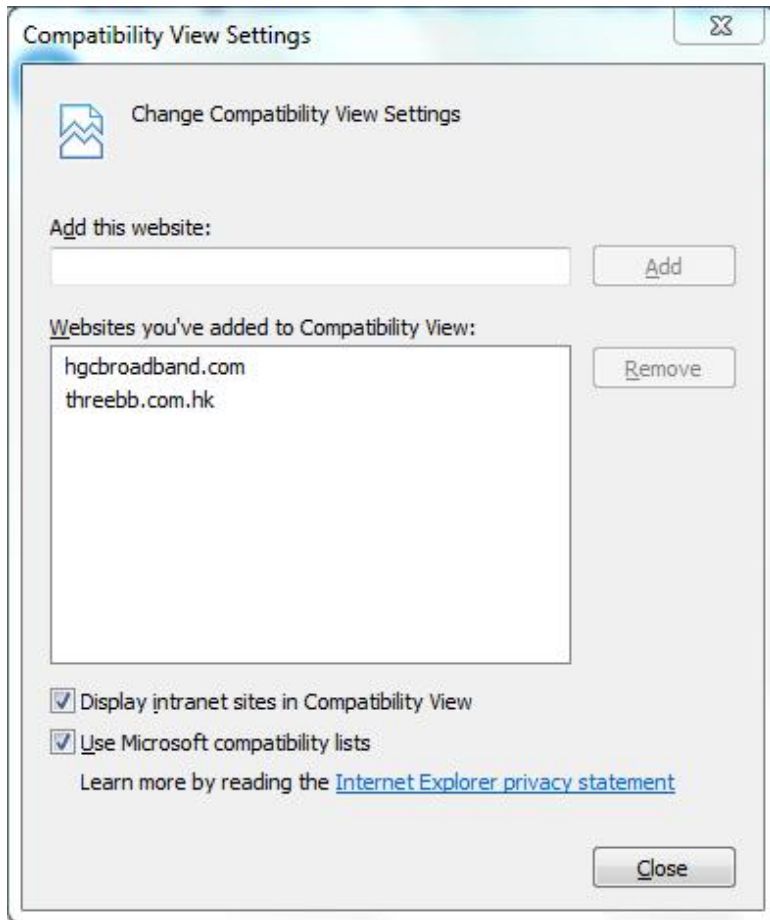


Internet Explorer has a Compatibility View settings that handles its change for classic web portals.

In Windows 8 / 8.1 desktop Internet Explorer, visit the “Compatibility View settings” from the menu:



Type in the URL <http://webmail.hgcbbroadband.com/> and click Add.
Type in the URL <http://webmail.threebb.com.hk/> and click Add.



Click [Close] to close this dialog and visit webmail again:

